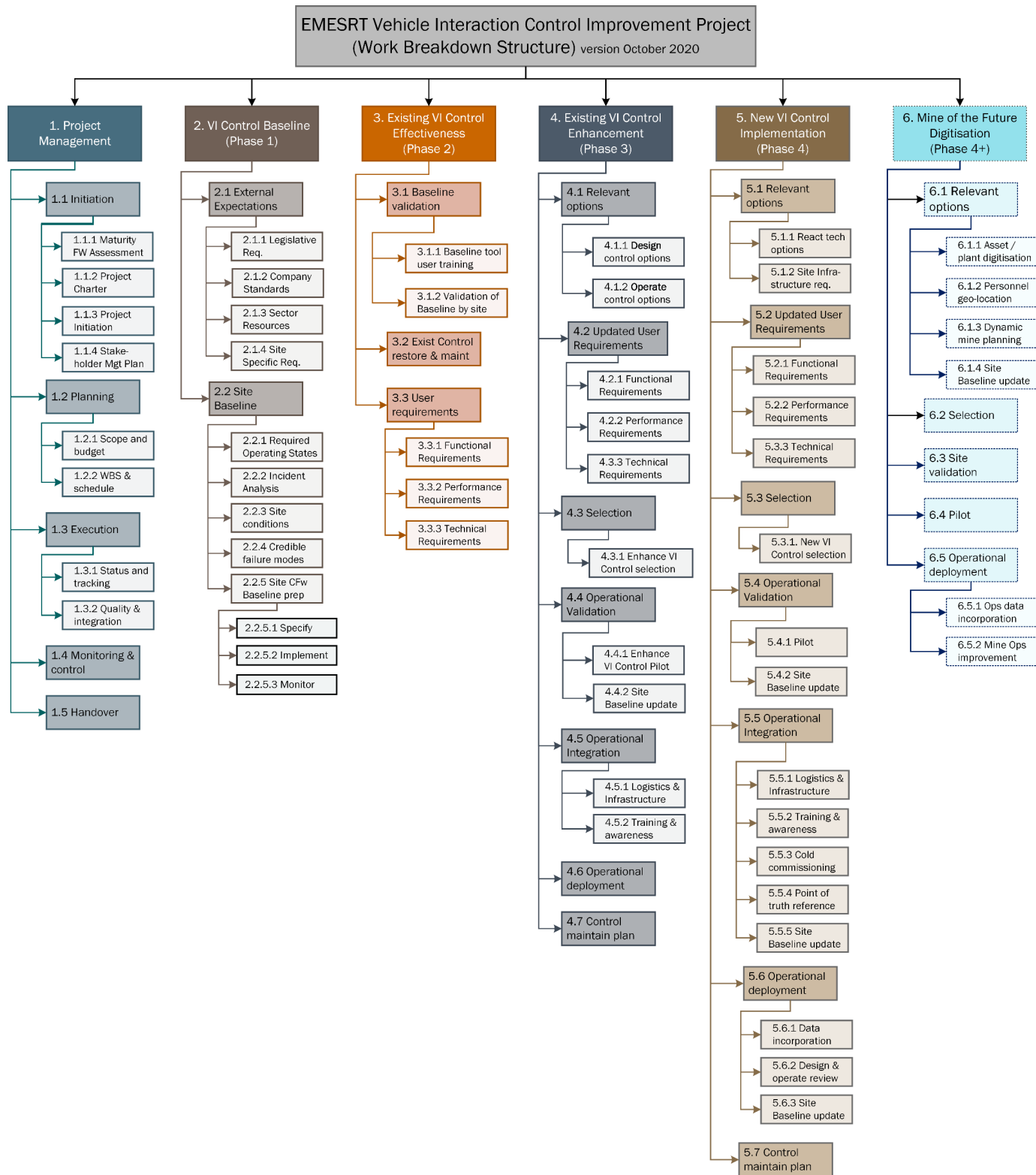


EMESRT Resources Vehicle Interaction Control Improvement Project Work Breakdown Structure (WBS)



A Work Breakdown Structure (WBS) breaks complex projects into smaller components called work packages. This WBS has these component areas:

1. *Manage as a Project*
2. *Understand the effectiveness of your baseline controls i.e. where you are starting from*
3. *Work with your people to identify existing operational improvements – close the gaps, return to nameplate performance*
4. *Identify and implement - iterative design and technology innovations*
5. *Identify and implement - step change design and technology innovations*
6. *Fit the approach into your broader company strategic approach*